

GAME RANGERS
INTERNATIONAL



ANNUAL REVIEW 2017

In partnership with the Department of National Parks and Wildlife



CEO's Message

As we enter our 10th year of existence I thought it would be poignant to reflect upon a decade of support to conservation in Zambia and to remember a truly great man: Mr David Shepherd (CBE).

Much of the conservation successes we have supported to date are a direct result of the inspiration and encouragement David provided during his many visits to Zambia. In fact, so frequent were David's visits during his 50yr love affair with this nation that he was often described as a Zambian living in the UK. But it was more than just his passion which David brought to the conservation table - through his foundation, the David Shepherd Wildlife Foundation (DSWF), millions of dollars have been mobilised toward the conservation effort. It was because of David and DSWF that we were able to establish GRI and grow it into what it has become today. Thanks to David's tremendous following, and with the support of DSWF, we have brought together a formidable network of like-minded partners, including: TNC, AWF, WWF, USAID, Panthera, IFAW and OAT. Through these partnerships we have mobilised more than USD\$7.5M for conservation in Zambia during the last 10 years, which has resulted in the following successes: -

- 125 x Rangers empowered to undertake 50,000 Man Patrol Days
- 795 x poachers and wildlife traffickers apprehended
- 450 x illegal firearms confiscated
- Conservation awareness raised to 15,000 local school children
- 85 x local staff provided with full time employment
- Establishment of the region's first Specialised Anti-Poaching Unit (SAPU)
- Establishment of a world class elephant rescue, rehabilitation and release programme

Of course, none of these successes would have been possible without the dedication and commitment of the Department of National Parks and Wildlife (DNPW). We salute DNPW for their tireless efforts and all of the brave Rangers on the front line of conservation.

As we enter this next chapter in our existence there are many exciting plans and developments on the horizon. We will endeavour to build upon the legacy left behind by David Shepherd and increase our support to DNPW and local communities so that we may expand and replicate our conservation successes across a wider landscape. This vision can only be possible if we all work together and leverage our strengths toward a common goal. To this end, we look forward to working with all our trusted partners for the greater good of conservation.

"Much like the elephants he so loved to paint, David was a gentle giant amongst men."

Sport Beattie



..... David Shepherd CBE
1931-2017

David, you have left us, but not with nothing. You are a man uniquely made. You poured your love and your passion for God's creation onto paper and canvas and life leapt out of them, touching the young and old alike. You encouraged us all to appreciate God's gifts of nature, from tiny blades of grass and bits of bark to mighty mammoths, causing many to do our bit in their preservation. The world is a better place because of your works.

Dr. Kenneth Kaunda

Mission

Empowering Rangers and Local Communities to Conserve Nature

Vision

A sustainable planet where man and nature co-exist in total harmony

Values

Empowerment - Fairness to All - Integrity - Trust - Transparency - Team Effort - Accountability

About

Game Rangers International (GRI) is a conservation organisation working alongside the Department of National Parks and Wildlife (DNPW) and local communities to protect wildlife in Zambia.

GRI embraces a holistic approach to conservation:



GRI's core capability lies within its Ranger Empowerment Model, which is designed to facilitate and empower existing Rangers with adequate levels of welfare, training and operational support to motivate them to be more efficient and effective in conserving wildlife. The model is a partnership with government, whereby government provides the manpower, pays the salaries and meets the statutory obligations in relation to this manpower, and GRI supports the rest, including but not limited to: - housing, schooling, medical & bereavement support, performance bonuses, uniforms, kit & equipment, vehicles and logistics, rations, communications, technical and support services.

The Ranger Empowerment Model may best be described using the Torch and Batteries analogy: - DNPW is the torch and we are the batteries. You may not see us, or feel us, but we are inside helping to provide energy (empowerment) for the torch to be switched on by DNPW, to shine brightly. At some point, when government is in a position to provide its own fully charged batteries then GRI can remove its batteries (funds) and transfer them to another torch.



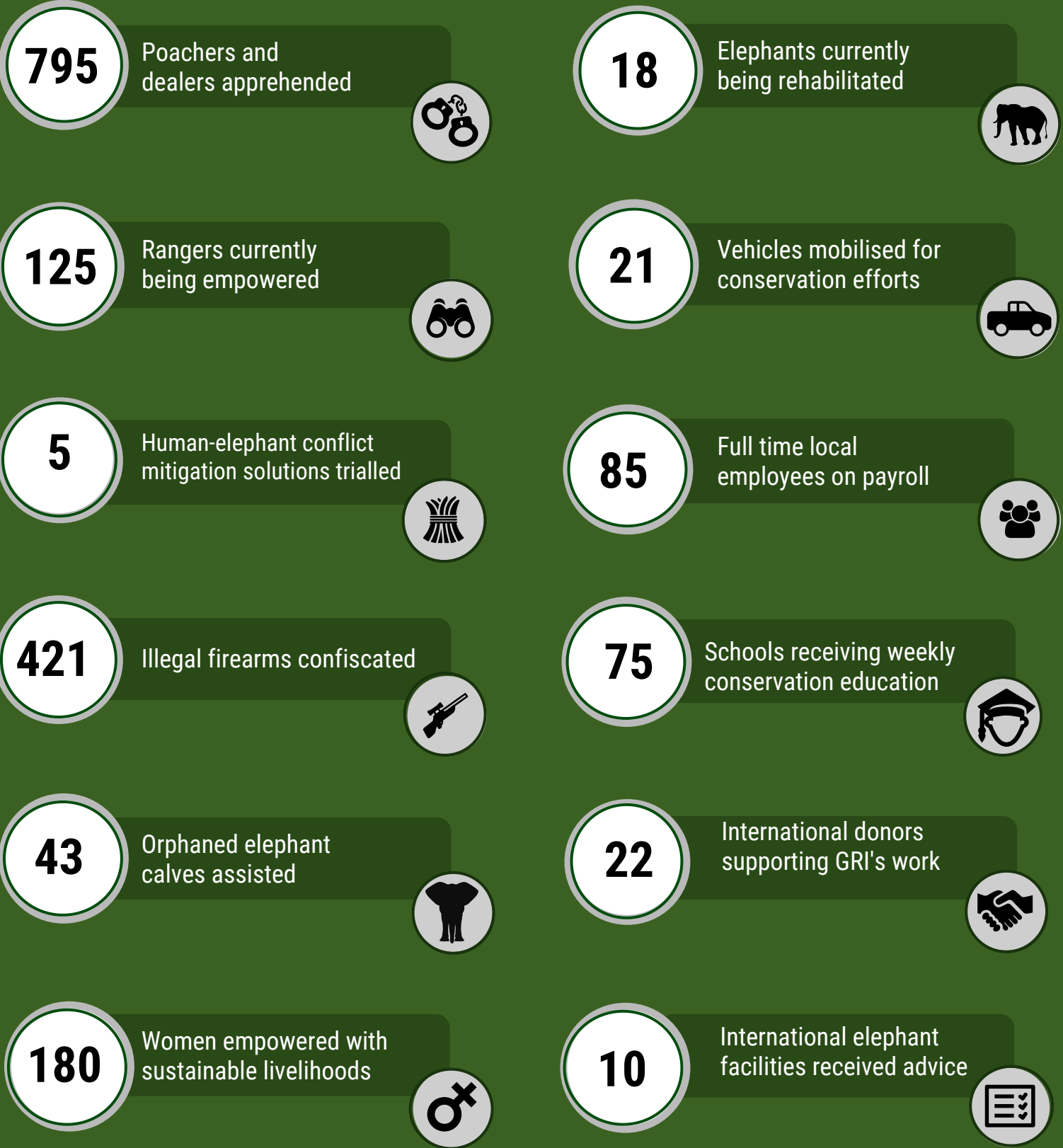
GOAL



10 Years of GRI

GRI was established ten years ago with 5 staff and an annual budget of \$120,000 from a single donor.

Thanks to the generous support of our partners, GRI has since raised \$7.5 million for conservation in Zambia, enabling us to achieve the following successes:



RESOURCE PROTECTION

GRI's Resource Protection Department supports the Department of National Parks and Wildlife to provide welfare, training and operational support to wildlife personnel on the frontline of conservation.



PREVENT • PROTECT • PRESERVE

GRI's Resource Protection Department aims to protect Zambia's wildlife by countering illegal wildlife activity.

GRI supports and empowers five DNPW anti-poaching units (APUs) through enhanced training and equipment.

Four territorial APUs patrol specific, resource-rich areas at strategic locations within Kafue National Park. The fifth APU is known as the 'Special Anti Poaching Unit' (SAPU).

SAPU is an intelligence driven rapid reaction force, which conducts strikes against illegal trafficking networks in and beyond KNP, and has the capability to counter specific poaching threats, from its operating base at Hook Bridge.

In addition to direct support of DNPW's anti-poaching efforts, GRI provides a full time aerial presence with its Savannah surveillance plane, based at Chunga Airstrip.

GRI also mobilises Kafue National Park's only full time Fire Fighting Unit which creates fire breaks at strategic locations, provides sensitisation to lodges, traditional fishing camps and local communities, and provides the first responder role to illegal and unplanned fires during the hot dry season.

GRI's Workshop and Maintenance Team maintain existing physical assets, and support the development of additional infrastructure.

2017 ACHIEVEMENTS

In 2017, 17,000 Man Patrol Days of anti-poaching and anti-trafficking operations were conducted through 5 anti-poaching units within and beyond KNP, leading to **159 APPREHENSIONS**.



4,464
kg bush meat
confiscated



6
carnivore skins
confiscated



84
kg Ivory
sized



64
illegal firearms
confiscated



13
pangolins
rescued



484
snares
recovered



Southern Cross Motors donated a Jeep, to support SAPU Mike 9 team in patrolling the M9 Highway. Mike 9 will counter wildlife trafficking and poaching, and provide a full-time deterrent to speeding, littering and fire-starting in the Greater Kafue Landscape.

The David Shepherd Wildlife Foundation generously donated 3 brand new Toyota Land Cruisers to the Special Anti-Poaching Unit, enabling rapid deployment throughout Zambia.



40
Illegal fires
attended to



647
Fire Fighting
Man Days



35
Prescribed
Fires

The Fire Fighting Unit spent the early dry season working with operators and DNPW to create fire breaks across the greater Kafue landscape and sensitising local communities to try to reduce illegal fires.

Generously funded by the Olsen Animal Trust and the David Shepherd Wildlife Foundation, GRI's Savannah Light Sport Aircraft became airborne in July, and completed 100 hours of flight time.



GRI facilitated the replacement of dormitory roofs at Chunga Training School with generous funding from The Beit Trust, and refurbished and rethatched the Lufupa Gate Post, Hook Bridge.



Garrett & Dennis from the **US Forestry Service** provided valuable mentorship & training to the Fire Fighting Unit.

Rehabilitation of Chunga Airstrip progressed with the addition of toilets, a secure aircraft hanger and a DNPW command post for the Aerial Surveillance Unit

GRI continued to sponsor regular **litter picking** exercises along the M9 highway, and supported vegetation clearance from the verges of Spinal Road



GRI supported 7 DNPW officers to attend a 'Train the Trainer' course at the **Southern African Wildlife College**

Guy Disney and Duncan Slater of **Walking with the Wounded** facilitated life-saving trauma response training



The Maintenance and Developments Team upgraded the Ranger accommodation and ablution facilities at SAPU HQ, Hook Bridge

SAPU continued to fulfil its mobile **rapid reaction** mandate with successful raids on ivory & pangolin traffickers



2018 OBJECTIVES

1

Support DNPW to expand and consolidate the Special Anti-Poaching Unit (SAPU) to undertake intelligence-led operations to disrupt and deter wildlife crimes in hotspot areas and key transit locations within the KAZA footprint of Zambia and the greater Kafue Eco-system, including Blue Lagoon National Park

2

Provide Welfare, Training and Operational support to motivate front-line DNPW Rangers working within conventional Anti-Poaching Units (APUs) to undertake regular patrols in the greater Kafue Eco-system, which are informed by SMART (Spatial Monitoring and Reporting Tool)

3

Support DNPW to implement the Annual Fire Work Plan in the greater Kafue Eco-system

4

Support DNPW with an aerial surveillance capability in greater Kafue Eco-system

5

Support DNPW with the ongoing resuscitation and rehabilitation of Chunga Training School and assist DNPW to achieve their training targets at the facility

6

Support DNPW to operationalise the use of virtual fence technology on Lake Itzhi Tezhi, KNP - as part of the Connected Conservation Initiative sponsored by WWF, Cisco Systems and FLIR

7

Work together with all stakeholders to maximise support to DNPW and the long term goal of securing the greater Kafue Eco-system as a secure and sustainable wildlife asset

8

Support DNPW to secure Lusaka National Park as a high profile wildlife asset

9

Increase funding and expand Law Enforcement support of DNPW Rangers and fire fighting teams in the greater Kafue Eco-system

10

Strengthen senior management capacity within GRI Resource Protection Department

PRIMARY PARTNERS



COMMUNITY OUTREACH

GRI's Community Outreach Department supports the Department of National Parks and Wildlife to raise conservation awareness and support sustainable livelihoods in communities contiguous to Protected Areas



EDUCATE • EMPOWER • ENGAGE

GRI's Community Outreach Department has developed a low-cost, effective and easily-replicable community conservation model, designed to increase conservation awareness and support sustainable livelihood opportunities. The model introduces "Community Outreach Cells" – geographically focused hubs of education and empowerment activities. The placement of cells is determined by national hotspots of wildlife crime, as identified by GRI's Resource Protection and Wildlife Rescue Departments.

Each cell is operated by one Education Officer and one Community Officer. The Education Officer is responsible for building the capacity of 50 teachers to deliver weekly conservation education to 1,000 children in 25 schools. The Community Officer is tasked with establishing 5 women's groups and empowering each to initiate a sustainable income generation project. A mobile Cell Coordinator travels between each cell, presenting conservation-themed radio programs at selected community FM stations, and monitoring cell activities.

In addition to these three set components, the cells incorporate ad-hoc 'special projects,' in response to individual community needs. These may include human-elephant conflict mitigation strategies, the development of schools, clinics and education centres, or supporting vulnerable community members. Special projects are entirely funding-dependant and unique to each cell.

GRI Community Outreach believes that by highlighting the aesthetic, economic and ecological value of wildlife, and emphasising the many benefits associated with sustainable conservation and careers in the environmental sector, we can inspire greater conservation awareness, and ultimately reduce poaching in Zambia. Recognising that illegal wildlife products in some way sustain many families in remote rural Zambia, GRI is also working to reverse this trend. The Community Outreach Department introduces alternative livelihood opportunities, improves health and food security, and empowers individuals to protect and preserve their natural resources.

2017 ACHIEVEMENTS

In 2017, 3,000 Grade 5 and 6 children across Zambia received weekly conservation education. Since the inception of GRI's education programme, we have reached over 15,000 children.



50 teachers trained as
Primate Protection
Ambassadors



1,352 children received a
conservation lesson at the Lilayi
Elephant Nursery



6 lessons developed for the
Pangolin Preservation module.



8 women's groups
fully empowered and
supported



1 portable dental
clinic donated to
Itezhi-Tezhi Hospital



6 flushing toilets
installed at Ngoma
Basic School



2 new roofs installed
at Musungwa School



10 new mattresses
donated to Ngoma
Basic School



40 treated mosquito
nets distributed to
under 5's at Mukambi

The Community Outreach Department expanded beyond Lusaka and the Greater Kafue Landscape, into the Copperbelt region, providing crucial conservation awareness in a hot spot of illegal activity.



District Community
Officer Britius Munkombwe
recognised as an Emerging
Wildlife Conservation Leader



36,000 listeners tuned in
the *Conservation
Conversations*
every week



12 women engaged in
chilli growing as a solution
to human-elephant conflict

15 iSchool tablets, each loaded with GRI's **iConserve app** were donated to the students of Mukambi Community school

17 vulnerable community members received a 32litre **Rotary Roller** to ease the daily collection of water



16 children of **village scouts** enrolled in Shanangoma School, bordering Kafue National Park

2,215 Zambian children were engaged in **elephant sensitisation** and education programmes at the Lilayi Elephant Nursery



Mukambi Women's Group raised over \$250 selling handmade sustainable **feminine hygiene kits** in neighbouring communities



20 students from Dane Court Grammar School in the UK hosted a **conservation camp** for Zambian children living near the Lilayi Elephant Nursery

GRI's women's groups raised over \$3,500 of **seed funding** from selling donated clothing



2018 OBJECTIVES

- 1 Produce weekly thought-provoking and engaging *Conservation Conversations* radio broadcasts
- 2 Increase the reach of *Conservation Conversations* across the entire Greater Kafue Landscape
- 3 Design and produce a conservation curriculum relevant to Zambia's natural resources
- 4 Build the capacity of local primary school teachers to deliver conservation education
- 5 Deliver weekly conservation education to children living contiguous to Zambia's Protected Areas
- 6 Collect and distribute donated clothing to Women's Empowerment Groups bordering Kafue National Park, providing a means through which to generate seed-funding for sustainable income generation projects
- 7 Construct Shanangoma Community School for the children of Village Scouts tasked with protecting the southern region of the Greater Kafue Landscape
- 8 Provide access to clean water to Mukambi School and Community, bordering the Kafue National Park
- 9 Provide welfare support to 10 vulnerable community members within the Greater Kafue Landscape
- 10 Complete construction of the Shezongo Dip Tank in the southern region of the Greater Kafue Landscape

PRIMARY PARTNERS



WILDLIFE RESCUE

GRI's Wildlife Rescue Department supports the Department of National Parks and Wildlife in the rescue, rehabilitation and release of wild animals injured or displaced as a result of human activity.



RESCUE • REHABILITATE • RELEASE

GRI is growing a vision to support DNPW with the development of a Wildlife Rehabilitation Centre to cater for all wildlife species in distress. Over the years GRI has supported with the care, rehabilitation and release where possible of a number of wildlife species including hippo, jackals, bush baby, buffalo, bush buck and duiker as well as in-situ support to injured wildlife including lions and elephants. With a high number of reported wildlife in distress there is a clear need to provide such support and resources to DNPW's veterinary department, in addition to GRI's core Wildlife Rescue work involving elephant orphans.

GRI's Elephant Orphanage Project has been in operation since 2007. Throughout Zambia elephant calves are found orphaned or displaced as a result of ivory poaching and human-elephant conflict. Under the age of two years old these calves are very unlikely to survive without the incredibly nutrient rich milk of their mothers.

Once an orphan has been identified, DNPW and GRI work to either stabilise the calf in situ or bring it to the safety of the Elephant Nursery in Lusaka. Here an experienced team of Keepers and veterinary specialists provide round the clock care, nursing the traumatised calves back to health.

Over time they begin to bond and socialise with the other orphans within the Nursery and gradually begin to form a new family. Once physically strong enough and old enough to be weaned from milk formula the elephants are moved to the Elephant Release Facility in Kafue National Park where they join the older orphaned elephants in a much bigger herd. Here they learn the importance of herd structure, hierarchy and etiquette, which is a vital element of their development and journey back into the wild.

GRI collects data on all elements of the elephants journey from point of rescue through to release and utilises this research to guide our methodology and inform management decisions. Our data and analysis on medical conditions and nutrition have been vital in saving the life of orphans and in particular we have developed an in-depth Behaviour Observation Study which provide essential feedback as to the condition, development and progression of each elephant towards the goal of release. As soon as the elephants take their first steps away from the Release Facility we implement a Post-Release Monitoring plans which involves tracking the elephants via satellite locations as well as use of VHF technology to support visual observations in the wild.

2017 ACHIEVEMENTS

3

Orphaned elephants successfully rescued



5

International elephant rescues supported



GRI's "Orphaned Elephant Awareness" Campaign was active in several areas of Zambia, including Lower Zambezi and South Luangwa National Parks, educating local communities about elephant conservation.

A team of 17 Wildlife Rangers cared for the orphaned elephants across GRI's two Wildlife Rescue facilities - the Lilayi Elephant Nursery and the Kafue Release Facility.



Matriarch orphan Chamilandu was observed mating with wild bulls, demonstrating that she is maturing, and has reached the release-phase of her rehabilitation.

Stage 4 orphaned elephants Chamilandu and Bakoka engaged with wild bulls outside the Kafue Release Facility on 3 separate occasions.



STAGES OF RELEASE

Stage 1. In rehabilitation at the Nursery

Stage 2. At the Release Facility, stabled overnight

Stage 3. At the Release Facility, enclosed within the protective Boma overnight

Stage 4. Spend nights outside the Boma, remain with the Orphan Herd more than 50% of the time

Stage 5. Spend nights outside the Boma, remain with the Orphan Herd less than 50% of the time

Stage 6. Living full time in the Wild

Stage 1



Stage 2



Stage 3



Stage 4



5,952 Litres of donated milk consumed by the elephants



14 International volunteer assistants



648 Hours of elephant behaviour collected



5 orphaned elephants fitted with satellite collars

Thanks to a generous donation from the **Little Trunks Project**, a solar system was fitted at the Kafue Release Facility



A new water system was installed at the Kafue Release Facility thanks to a generous donation from the **John Casson Foundation**

GRI personnel attended the **Zambian National Elephant Management Strategy** planning workshop

GRI carried out **orphaned elephant rescue training** in the Feira region of South Luangwa - a poaching hotspot where many of the orphans in GRI's care have come from



5 elephants within the release herd were fitted with new GPZ tracking collars manufactured by **Vetronics Aerospace**, to track movements when they are separated from the orphan herd



A new Post-Release Monitoring Coordinator was employed to implement and manage the long-term **post-release monitoring** programme that documents the reintegration, movements & survival of the released elephants

Over **5,700 local and international** guests visited GRI's Elephant Nursery in 2017, to learn firsthand about conservation in Zambia



2018 OBJECTIVES

1

Develop the Lusaka National Park proposal to include a Wildlife Rescue Centre (incorporating Wildlife Vet Clinic, Mobile Vet Unit, Rehabilitation-Release Facility, Wildlife Sanctuary and relocation of the Elephant Nursery)

2

Facilitate a DNPW-GRI workshop to revise and update the Strategic Plan for Release

3

Improve elephant rescue capabilities with purpose built Rescue Trailer and Vehicle

4

Support DNPW to establish a Zambian Wildlife Welfare Group and specific Elephant Support Group

5

Relocate Release Phase Stage elephants from Lilayi Elephant Nursery to Stage 2 Kafue Release Facility

6

Continue to implement an awareness and training campaign for orphan elephant rescue hotspots and identify suitable quarantine/holding facilities

7

Implement Elephant Orphanage Project Curriculum and computer training for all staff and ensure all are up to date with First Aid qualifications

8

Re-engage the HEC working group for south Kafue National Park with all local stakeholders (community, DNPW, GRI) and roll out mitigation trials for upcoming crop raiding season

9

Produce regular science blogs and research reports, and submit papers for publication

10

Continue Post-Release Monitoring Plan for Release Phase Elephants

PRIMARY PARTNERS



SUSTAINABILITY

2017 EVENTS



GRI's 2017 ELEPHANT EPIC raised over \$15,000 for wildlife conservation.

Over 130 competitors participated in the annual Mountain Bike Race, cycling over 75km from Lusaka to Lower Zambezi.

This event would not have been possible without the generous support of our major sponsors: - Bell, ZAMEFA, Pre Secure, Kwik-Fit, Castle Lite, R&G Printing, Southern Cross Motors and Signs of the Times.

Congratulations to Overall Winner Owen Green, who completed the route in just 2 hours 23 minutes!

In 2017, GRI partnered with DNPW, the David Shepherd Wildlife Foundation and Walking with the Wounded to participate in THE FUCHS ELEPHANT CHARGE, an annual 4x4 event which raises funds for conservation education in Zambia.

GRI's team "The Bushpigs" were one of just seven teams to finish the Charge, and were honoured to be awarded the coveted *Spirit of the Charge* award for selfless conduct during and after the Charge.



SOCIAL MEDIA



game_rangers_international

12,100 Followers



GameRangersInt

1,789 Followers



GRI - Zambia

12,300 Followers

GRI - VOLUNTEER PROGRAMME



Volunteers help GRI to fulfil our mission of *Empowering Rangers and Local Communities to Conserve Nature* by:-

- Contributing to the overall sustainability of GRI
- Helping to build the capacity of Rangers and local communities
- Contributing to global awareness of our conservation efforts

In 2017, GRI hosted 15 international volunteers from 7 different countries. Three Community Outreach volunteers helped to educate children and empower women at Mukambi Community. Two Media and Marketing Volunteers assisted with the GRI Elephant Orphanage Project's communication strategy, and ten Research Volunteers participated in GRI's elephant behavioural observation study.

VOLUNTEER ALUMNI

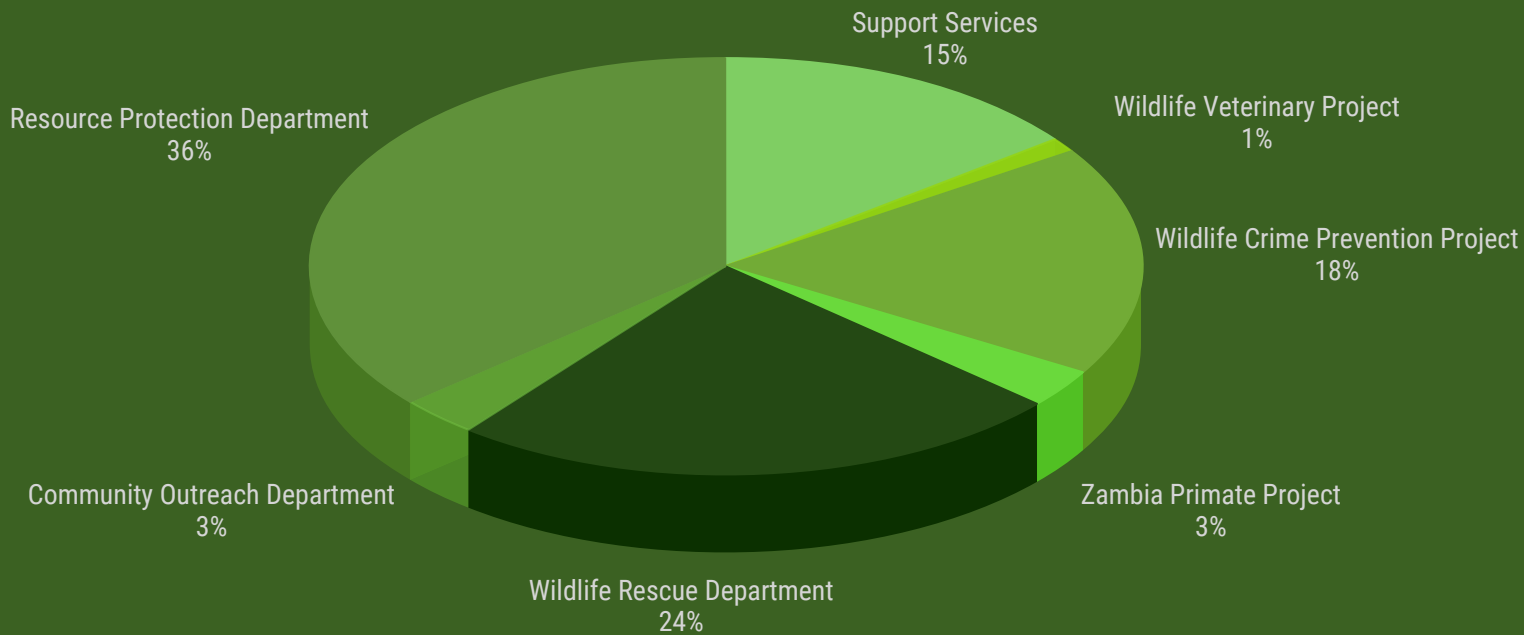
Candy and Francis Booth, founders of "The Little Trunks Project" volunteered with GRI's Elephant Orphanage Project in November 2016. In April 2017, The Little Trunks Project hosted the 'Art for Elephants' Exhibition in Fremantle, Australia raising over \$1,100 for the orphaned elephants.



During her volunteer placement with GRI's Elephant Orphanage Project in July 2016, Emma Waelput spent a day with the Community Outreach Team, distributing rolling water barrels to vulnerable community members. On her return to Belgium, Emma raised over \$850, enabling us to purchase 15 more barrels for elderly people living contiguous to Kafue National Park! The Roll Out the Barrel Trust then matched her donation, sending a shipment of 30 water barrels to Zambia in August 2017.



2017 FINANCIAL SUMMARY



In 2017 GRI rebuilt following the divestment of two projects. The rebuilding process involved a review of GRI's internal systems, strategic approach and a consolidation of our vision and mission.

GRI invested considerable resources to rebuild operating processes based on the systems review and to align with the new vision. These processes aim to support accountable and transparent systems through establishing a secure, robust accounting and financial system.

Investment in systems also involved the development and roll out of human resource, finance and procurement policy manuals. A key objective is that GRI can meet more rigorous compliance requirements.

Total Expenditure

Support Services	351,901
Wildlife Veterinary Project	26,723
Wildlife Crime Prevention Project	430,891
Zambia Primate Project	72,333
Wildlife Rescue Department	582,144
Community Outreach Department	75,023
Resource Protection Department	876,860
Total Expenditure	2,415,875



Improve access to clean water for a vulnerable community member

\$65



Feed an orphaned elephant for one week

\$30



Provide a Ranger with rations for a 20 day anti-poaching patrol

\$100

#WeAreAllRangers



Plot 2374, The Village, Leopards Hill Road, Lusaka | +2600 259871
www.gamerangersinternational.org | info@gamerangersinternational.org
Trustees: Melanie Shepherd, Sport Beattie, Rajan Ranchhod, Robin Miller
NGO Registration Number: RNGO/101/0185/14

GAME RANGERS
INTERNATIONAL