
GAME RANGERS

INTERNATIONAL



IMPACT REPORT

2021



#WEAREALLRANGERS





Table of

CONTENTS

ABOUT GRI	03
FOUNDER'S MESSAGE	04
RESOURCE PROTECTION	5 - 15
WILDLIFE RESCUE	16 - 21
COMMUNITY OUTREACH	22 - 26
CONSERVATION TECHNOLOGY	27
WILDLIFE DISCOVERY CENTRE	28- 29
SUSTAINABLE DEVELOPMENT GOALS	30
FUNDRAISING, MARKETING & COMMS	31 - 32
FINANCIAL SUMMARY	33 - 34



ABOUT US

Game Rangers International (GRI) is a non-profit conservation organisation working to empower Rangers and local communities to conserve wildlife and wild spaces. GRI embraces a holistic approach to conservation, empowering Rangers across three core thematic areas - Resource Protection, Wildlife Rescue and Community Outreach. GRI's core capability lies within its Ranger Empowerment Model which is designed to facilitate and empower both government and community Rangers with

adequate levels of welfare, training and operational support. The aim of this model is to support enhanced safety, efficiency and effectiveness across the conservation duties the Rangers perform. This model exists in direct partnership with governments and local communities, who supply the positions, salaries and statutory obligations whilst GRI endeavours to support the rest. A centralised administrative, support and governance system ensures donor funds are managed transparently and create maximum impact.

FOUNDER'S MESSAGE

Founder and CEO, Sport Beattie

Mr Samson Banda, DNPW Commander of the Marine Anti-Poaching Unit, sadly lost his life to the terrible menace of Covid 19 in January of 2021.

Our Field Head Quarters in Kafue south went into strict lockdown and all five Rangers, including myself, who had aided in the recovery of Mr Banda to hospital, were placed into immediate quarantine. A small corner of our camp was cordoned off with crime scene tape and that is where we remained for almost two weeks. It was a worrying period, not just for us, but for everyone, everywhere – it seemed. It was a time to reflect and remember, and a time to recalibrate GRI's future.

Thankfully, after this unfortunate incident the year got progressively better, fairly swiftly and I hope, as you read this report you will agree that once again, GRI has achieved some fantastic results for wildlife and wild spaces. As ever, none of this would be possible without the full co-operation and collaboration of the Department of National Parks & Wildlife (DNPW), the local communities, our erstwhile donors and conservation partners.

One of the highlights for GRI during 2021, was the initiation of the construction of the GRI – Wildlife Discovery Centre. This long-awaited development is a dream come true for GRI and is a continuation of the legacy of one of conservation's great heroes, the late Mr David Shepherd (CBE).

With the official opening due to take place in the 3rd quarter of 2022, the GRI – Wildlife Discovery Centre will serve as a beacon of learning and inspiration for all of Zambia's young conservationists, cum Rangers.



Together with our conservation partners, it is a place where we hope all people, from all walks of life and of all ages, can come together to appreciate the value and importance of protecting the natural world around us. We are hugely grateful to everyone for all the support we have received to date, to help bring this vision to life.

It is also important to mention that, in 2021 Zambians demonstrated to the world, once again, how democracy is still alive and well in the world. The nation ushered in a new government with great pride and dignity. Zambia's extraordinary political maturity and the on-going peace and stability which prevails in this beautiful country, bodes well for the future of conservation, I believe.

Finally, I wish to respect and remember all those brave Rangers, like Mr Banda, who have fallen before us. We will honour their memories and their ethos of always putting service above self by doing everything humanly possible to make sure we never give up the good fight to save wildlife and wild spaces.

Thank you to every single person in my team for your indomitable spirit and for all your resilience and tenacity throughout 2021. It has been my great pleasure to work alongside you for the last 14 years.

Sport Beattie
Founder and CEO
Game Rangers International

RESOURCE PROTECTION

Programme Director, James Amoore

2021 started tragically with the death of the Marine Anti-Poaching Unit's Commander, Wildlife Protection Officer (WPO) Samson Banda, from Covid-19.

His passing meant that the second-in-command has had to step into the Commander's shoes, and that a coxswain, previously a Community Scout, stepped up as second.

Although the loss of the previous Commander was felt by all, the resilience and determination displayed by the Rangers to continue their critical roles in the face of tragedy was testament to the character of DNPW Officers and Community Scouts.

These men and women from all over Zambia dedicate their lives to the protection of their country's natural resources.



It is sometimes all too easy to forget that they put their lives on the line daily, not only facing the threat of armed poachers, but also from the wildlife they are trying to protect.

It is my hope that their efforts are not left unnoticed by those around the world who are able to visit these wild places and benefit from the tireless work of the wildlife Ranger.

With thanks to our partners,



Special thank you to the community of Jacksonhole, USA, for their support of the Rufunsa Conservation Project

Resource Protection

SAPU NORTH

This Special Anti-Poaching Unit (SAPU) is an elite, highly trained intelligence-led team based out of Hook Bridge, Kafue National Park.

In 2021, SAPU North,

Empowered 16 Rangers

Conducted 2,777 Patrol Days

Apprehended 23 Suspects

Removed 160 Snares

IMPACT TO DATE



15,649
Ranger
Patrol Days



386
Apprehensions



1,054 Snares
Removed



186 Firearms
Confiscated



MILESTONE ACHIEVEMENTS



SAPU North hosted two British Army deployments who conducted training with the National Anti-Poaching Task Force in intelligence-led operations to counter the illegal wildlife trade in Zambia.



Successfully completed helicopter deployment, safety and familiarisation training, enabling them to be deployed in support of African Parks where needed.



Conducted an encroachment survey and burning of illegal charcoal in Mumbwa West.

Resource Protection

SAPU SOUTH

SAPU South is an elite, highly trained, intelligence-led team protecting the 3,000km² area that surrounds the Kafue Release Facility, protecting the elephant release herd, as well as other wildlife and wild spaces.

In 2021, SAPU South,

Empowered **13** Rangers

Conducted **1,875** Patrol Days

Apprehended **65** Suspects

Dismantled **6** Poachers' Camps

IMPACT TO DATE



14,649
Ranger
Patrol Days



215
Apprehensions



719 Snares
Removed



225 Firearms
Confiscated



MILESTONE ACHIEVEMENTS



Assisted with the tracking and darting of a snared, injured elephant.



Half of the team completed Human Rights Training and all team members completed first aid training (remaining Rangers will conduct Human Rights training in 2022).



Expanded informer network to increase success rate of operations.

Resource Protection

SAPU KAZA

SAPU KAZA is an elite, highly trained, intelligence-led team focussing on the Kafue element of the Kavango-Zambezi Trans-Frontier Conservation Area.

In 2021, SAPU Kaza,

Empowered **11** Rangers

Conducted **1,949** Patrol Days

Apprehended **67** Suspects

Dismantled **17** Poachers' Camp

IMPACT TO DATE



4,458 Ranger
Patrol Days



142
Apprehensions



77 Snares
Removed



47 Firearms
confiscated



MILESTONE ACHIEVEMENTS



Responded to information regarding a poacher seen from Nanzhila Lodge, tracked them down and apprehended the suspects and their dogs.



Conducted patrols around Dundumwezi gate with success, including combined patrols with Sichifula Anti-Poaching Unit.



Completed Earth Ranger training and started to successfully use Inreach device on patrols, relaying real time information to Command and Control Centre.

Resource Protection

MARINE APU

The Marine Anti-Poaching Unit (APU) patrols the Kafue National Park boundary on Lake Itzhi-Tezhi, and the lake shore, which forms the northern buffer zone to the Release Area. They react to information and intelligence from the Connected Conservation Initiative (CCI) in order to direct operations in the area.

In 2021, the Marine APU,

Empowered **24** Rangers

Conducted **1,289** Patrol Days

Apprehended **92** Suspects

Removed **6** Snares

IMPACT TO DATE



13,264 Ranger
Patrol Days



281
Apprehensions



148 Axes,
spears and
knives
recovered



157 boats
confiscated.



MILESTONE ACHIEVEMENTS



Utilised CCI technology to apprehend suspects fishing illegally at night during the fishing ban.



Protecting new towers installed by WWF and Cisco.



Completed training on use of model pit and planned night operations using the new training.

Resource Protection

COMMUNITY WILDLIFE PROJECT

Supported by USAID, the Community Wildlife Project aims to decrease poaching and other illegal activities, through law enforcement support to community institutions in the Greater Kafue Landscape.

In 2021, the Community Wildlife Project,

Empowered **44** Rangers

Conducted **6,306** Patrol Days

Apprehended **42** suspects

Removed **11** Snares

IMPACT TO DATE



13,906
Ranger
Patrol Days



70
Apprehensions



188 Snares
removed



18 Firearms
recovered



MILESTONE ACHIEVEMENTS



GRI engaged Renavatio Business Services Ltd to undertake the Endline survey to assess the achievements of the CWP project interventions, document any gaps or lessons and recommend measures for sustaining positive gains and improving programming in biodiversity conservation. The survey indicated that the project has achieved its objectives – improving law enforcement operations and fire management.



CWP developed a sustainability plan in consultation with all key project stakeholders which provides details on the roles that various stakeholders will perform to sustain the activities and results that are being recorded.



Private lawyer engaged over Mumbwa and Namwala GMAs encroachment and Joinder application letter for chiefs and Community Resource Boards filed in court.

Resource Protection

NKALA APU

The Nkala Anti-Poaching Unit provides a permanent presence in the Nkala Game Management Area, the eastern buffer zone of the orphaned elephant Release Area, in order to deter and disrupt illegal activity.

In 2021, Nkala APU,

Empowered **21** Rangers

Conducted **3,772** Patrol Days

Apprehended **4** Suspects

Removed **5** Snares

IMPACT TO DATE



17,737
Ranger
Patrol Days



41
Apprehensions



50 Snares
Removed



21 Firearms
Confiscated



MILESTONE ACHIEVEMENTS



The whole unit completed extensive, refresher training at Chunga Training School and in the field.



Protected communities from lions, elephants and hippos, all reported Human Wildlife Coexistence (HWC) instances.



Completed data collection training for ongoing study into Human Elephant Conflict (HEC) mitigation methods, and continued to collect data on HWC incidents.

Resource Protection

MUJIMANZOVU APU

Mujimanzovu Anti-Poaching Unit is a new, conventional unit which became operational late 2021, and is tasked with providing protection in the upper Lunga Luswishi area.

In 2021, the Mujumanzovu APU

Empowered 20 Rangers

Conducted 565 Patrol Days

IMPACT TO DATE



565 Ranger
Patrol Days



2
Apprehensions



16 Snares
Removed



2 Firearms
Confiscated



MILESTONE ACHIEVEMENTS



Successful recruitment and training of Community Scouts.



Establishment of Mujimanzovu Camp.



Operations commenced with SMART.

Resource Protection

RUFUNSA CONSERVATION PROJECT

The Rufunsa Conservation Project commenced in 2019 to support the Department of National Parks and Wildlife (DNPW), in their Resource Protection activities in the Rufunsa Game Management Area (RGMA).

In 2021, the Rufunsa Conservation Project,

Empowered 10 Rangers

Conducted 69 Patrols

Confiscated 2 Axes, spears or knives

IMPACT TO DATE



3,016 Ranger Patrol Days



112 Snares Removed



2 Poacher's Camps dismantled



50kg of Bushmeat recovered



MILESTONE ACHIEVEMENTS



Preliminary works completed on Kavalamanja integrated fish farming and poultry project with Chiefs supporting the initiative.



The Rufunsa Game Management Area (GMA) General Management Plan is under review and almost completed.



Construction of Janiero Camp, by Conservation Lower Zambezi (CLZ), has advanced. When complete, it will have a total of 10 houses for Community Scouts, an office, and Game Management Area check point, with a gate. Community scouts supported by GRI and CLZ will be based at this camp.

RANGER WELFARE

HR Manager, Alice Chimhini

The role of the Ranger is a dangerous one, as they live and work on the front line of conservation. To truly empower someone is to provide the necessary support and training required for that person to fulfil their role to the utmost of their ability.

In 2021, GRI worked with the Thin Green Line Foundation (TGFL) to establish the Fallen Ranger Fund in Zambia. This fund was initially established by TGLF in 2010 to support the dependents of fallen or critically injured Rangers. GRI is proud to be the implementing partner in Zambia.

Supporting Rangers and their families is a critical but a sadly overlooked aspect of conservation. It is essential that when a Ranger reports for work, they are focused entirely on their job. They should feel confident that they have the tools they need in the field and the support they need back at home.



2022 will see GRI renew its focus on this critical issue of Ranger welfare. It is only through supporting Rangers, both on duty and off, that we can truly empower Rangers to carry out their vital work of protecting wildlife and wild spaces.

MILESTONE ACHIEVEMENTS



Bereavement support offered to 6 families of rangers who suffered the loss of a relative.



Supported 3 Rangers who were terminally ill or fatally injured through to end of life and contributed with logistics for their burials.



Provided medical support to 8 Rangers and family members.



Provided funds to a Ranger to receive hip replacement surgery.

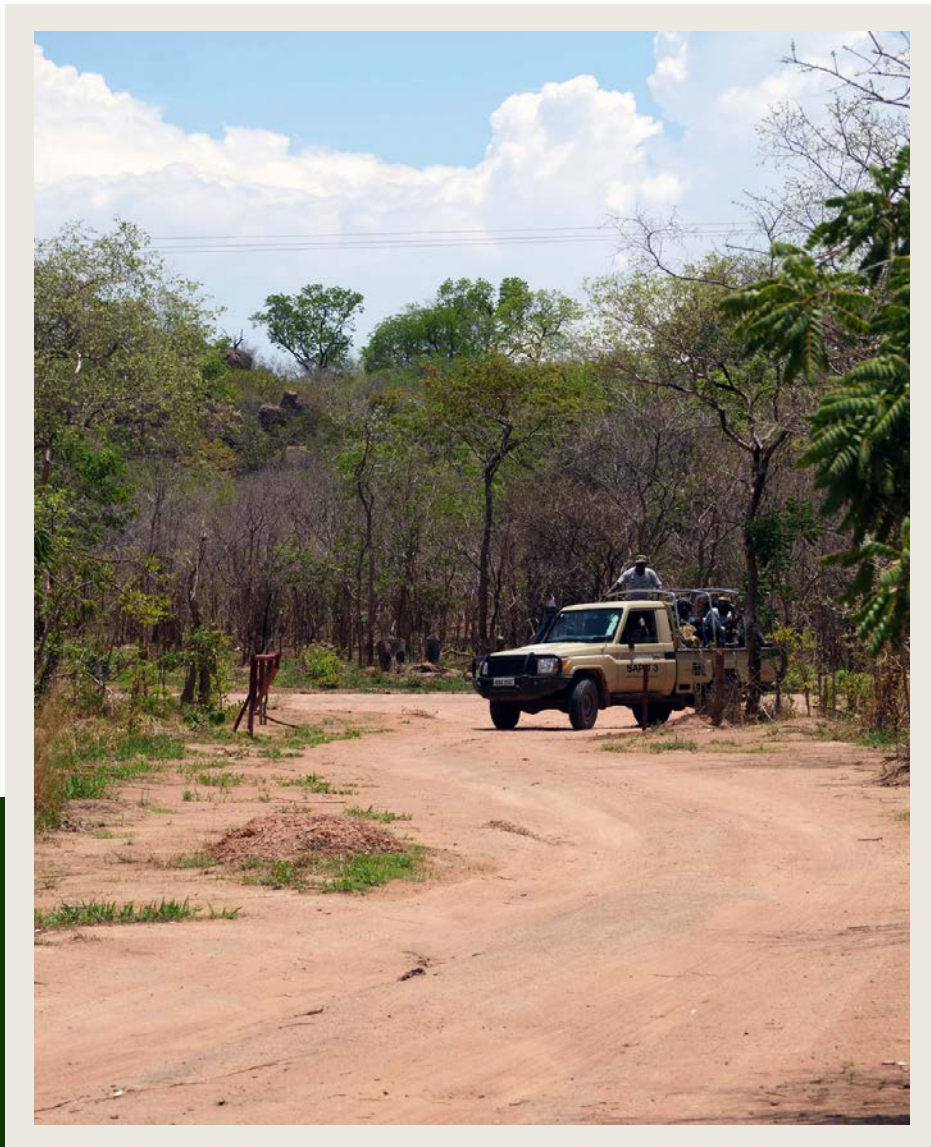


Supported all victims of a road traffic incident involving Community Wildlife Program Scouts.

With thanks to our partner,



2022 OBJECTIVES



PREVENT - PROTECT - PRESERVE



Complete the operationalisation of the Aerial Support Unit, in order to provide air support to law enforcement, monitoring, and research operations in Southern Kafue and beyond.



Focus law enforcement efforts in and around the orphaned elephant Release Area, in order to create an Intensive Protection Zone in which all flora and fauna can flourish.



Restructure law enforcement units at Musa Camp, in order to improve efficiency and effectiveness.



Increase effectiveness of operations on Lake Itezhi-Tezhi, with the aim of ensuring sustainable fishing methods in order to secure income, food, and livelihoods into the future for the communities living in Itezhi-Tezhi.

WILDLIFE RESCUE

Programme Director, Rachael Murton

With increased investment and support into wildlife veterinary capacity in 2021, we have been able to respond more rapidly to wildlife in distress and assist DNPW vets to reach more wildlife in need. In addition, we recognise the global importance of the One Health approach and have initiated our community veterinary support through a pilot rabies vaccination campaign to benefit both wildlife and the people living alongside wild spaces.

We currently support 23 elephants through the Elephant Orphanage, and with 16 elephants walking out side-by-side from the Release Facility, there is a real feeling of elephant social structure and the family that they have become. This stirring visual brings a sense of nearing our goals of seeing these majestic animals living back in the wild where they belong. As the orphans take these ever-increasing steps, our emphasis on both orphaned and wild elephant research has increased, and our partnership with Indiana University has facilitated a deeper understanding of the wild herds with whom these orphans will live alongside.

I am excited to expand our elephant research efforts and knowledge base in 2022, as well as apply long-term behaviour



studies to support and inform coexistence strategies both within our Community Outreach and Resource Protection operations.

Whilst we are dedicated to the much-needed uplift of the Release Facility structures, our entire team eagerly anticipates the relocation of the Elephant Nursery into Lusaka National Park, where the orphan's presence will contribute meaningfully to conservation awareness by engaging, inspiring and providing education opportunities whilst the young elephants will have access to a much 'wilder' rehabilitation environment.

With thanks to our partners,



Wildlife Rescue

WILDLIFE VETERINARY FELLOWSHIP

To up-skill, give experience and empower wildlife veterinary professionals to support the Department of National Parks and Wildlife's veterinary team whilst providing a dedicated veterinary capability for all animals within GRI's care.

In 2021, the Wildlife Veterinary Fellowship,

Empowered **1** Veterinary Ranger

Rescued **2** elephant orphans

Satellite collared **2** orphaned elephants

Facilitated rescue refresher training for all keepers

Treated **4** injured wild elephants in situ

Supported with the restocking of Nsumbu National Park: **22** buffalo and **48** zebra

Provided in situ assistance to wildlife in distress (including zebra, puku, wildebeest, 2 snakes)

Partnered with African Parks, Frankfurt Zoological Society, Conservation South Luangwa, Chipembele Wildlife Education Trust and the Livingstone community on various wildlife rescue/relief operations

IMPACT TO DATE



International rescue support provided to 14 other countries since 2007



27 species of wildlife supported



Vaccination of 5,516 dogs and cats against rabies



MILESTONE ACHIEVEMENTS



The first vet within the Wildlife Veterinary Fellowship completed a year of training and capacity building within the field of wildlife medicine and wildlife emergency response.



The first rabies vaccination campaign in partnership with the Zambian Government and Mission Rabies was rolled out in the communities bordering Kafue National Park in order to prevent wildlife-domestic animal transmissions and most significantly safeguard human life from the deadly rabies virus.

Wildlife Rescue

LILAYI ELEPHANT NURSERY

Young, vulnerable and compromised calves need intensive specialised care around-the-clock. This is provided at the Elephant Nursery, where traumatised young elephants begin their physical and psychological recovery together.

In 2021, the Lilayi Elephant Nursery, Empowered 10 Wildlife Rescue Rangers and 6 Support Rangers

Rescued and stabilised 2 orphans

Conducted 204 hours of behavioural research

Rehabilitated 8 elephants back to full health

Translocated 3 orphans to the Release Facility

Trained 21 local university (research & vet) students and hosted 5 interns

IMPACT TO DATE



55 orphaned elephants assisted to date



14 orphans graduated from Nursery to date



32 local students and 10 interns supported



24 Rangers trained as specialised Elephant Keepers since inception



MILESTONE ACHIEVEMENTS



Ground-breaking of the new Elephant Nursery in Lusaka National Park took place with thanks to vital support from the **International Fund for Animal Welfare** and their partners **Sinking Ship Entertainments**. This will provide the orphans with a much more spacious and 'wild' environment during their critical early rehabilitation stage.



Successful stabilisation and recovery of approx. 2-month-old Wamwayi, rescued in November. At such a young age he was incredibly vulnerable and required non-stop attention and support.

Wildlife Rescue

KAFUE RELEASE FACILITY

Once milk weaned, the orphans are transferred to the Release Facility where they continue to develop their strength, foraging ability and vital social skills. Here they are provided protection against predators until they are big enough, and confident enough, to live back in the wild where they belong.

In 2021, the Kafue Release Facility,

Empowered **14** Wildlife Rescue Rangers, **10** Support Rangers and **5** Frontline Rangers

Supported **16** elephants

Witnessed **5** incidents of wild elephant interactions with the orphan herd

Conducted **528** hours of behavioural research

Conducted wild elephant surveys, identifying **23** breeding herds within the Release Area

Collected camera trap data from **8** traps over **250** days, recording **19** species of wildlife and **856** individuals

IMPACT TO DATE



2 released elephants actively monitored



8 orphaned elephants released to date



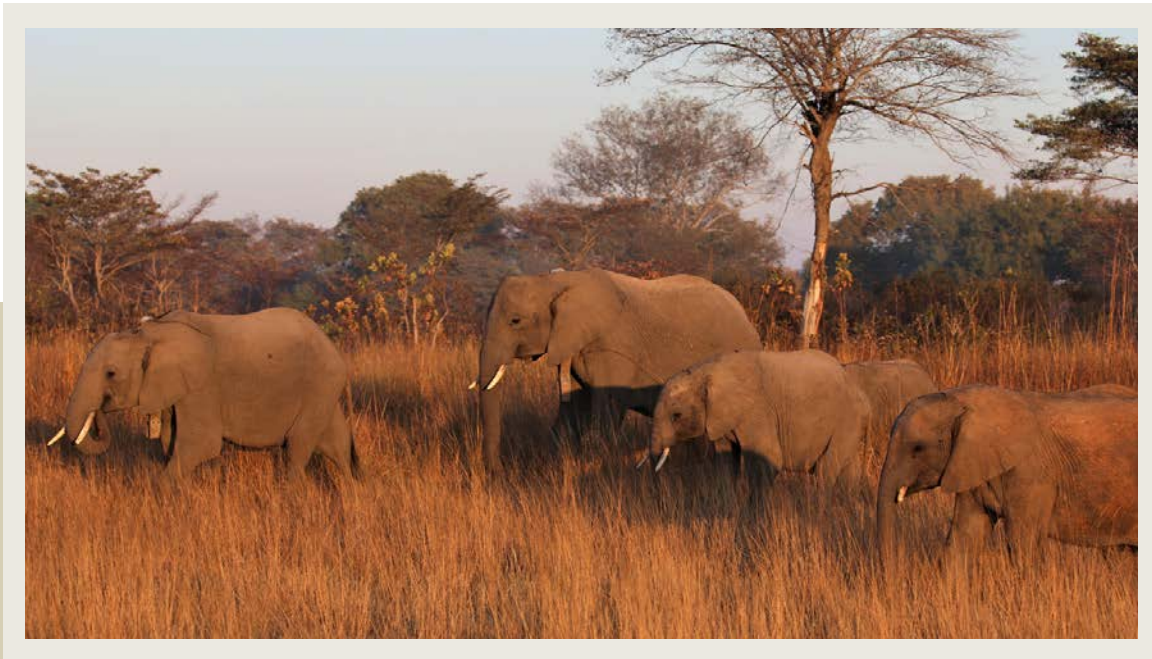
1 wild born elephant calf to an orphan mother



7 satellite and 1 VHF tracking collars implemented on orphans pre and post release



KAFUE RELEASE FACILITY



MILESTONE ACHIEVEMENTS



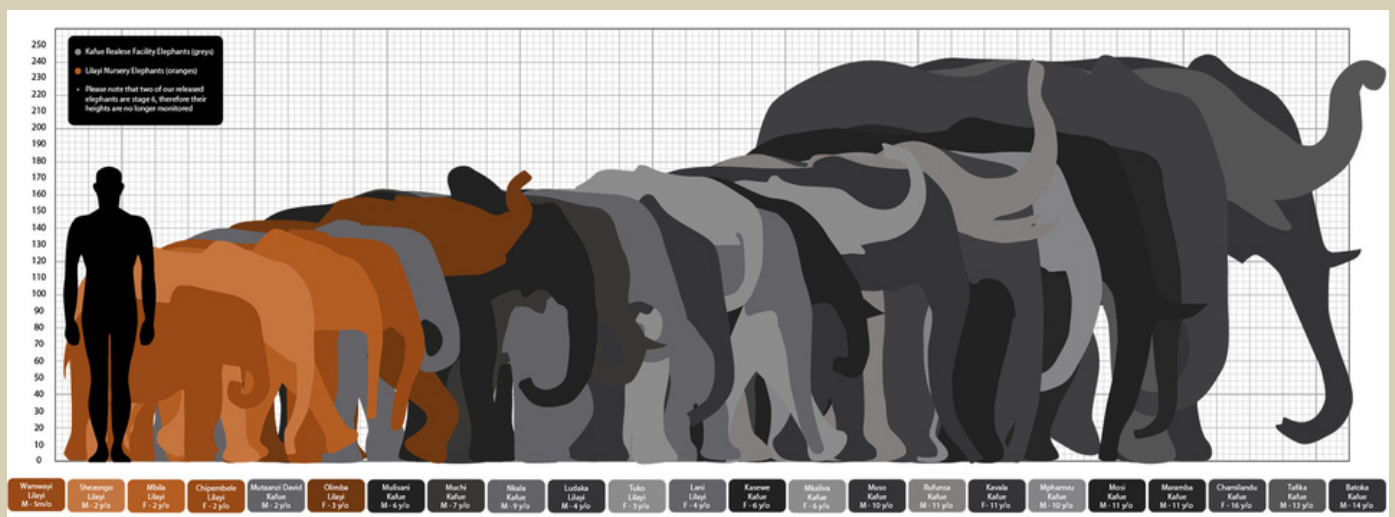
Completed the first ever controlled Smelly Elephant Repellent Trial utilising the Release Herd to contribute to scientific understanding of this Human Elephant Conflict (HEC) proactive mitigation technique in collaboration with WildAid.



Batoka has been fully integrated with wild elephant herds since February 2020. We have consistently followed his journey through GPS location, with numerous physical sightings and camera trap evidence of his established position within wild herd society and hierarchy. His data provides evidence of our most successful release and reintegration to date.



Implementation of a five-year research project with Indiana University to assess the impact of early life stressors on the aging and condition of both orphaned and wild elephants (previously subjected to wildlife crimes)



Height chart of the 23 orphaned elephants currently within GRI's care



RESCUE - REHABILITATE - RELEASE



Further develop the Wildlife Veterinary Unit to ensure increased responses to wildlife emergencies in situ and to conduct scientific research in areas of elephant health to promote orphan recovery, rehabilitation and welfare.



Relocate and open the new Elephant Nursery in Lusaka National Park, as part of the GRI-Wildlife Discovery Centre, where the elephants will contribute further to vital conservation education.



Complete significant infrastructure upgrades to the Release Facility camp (which is now 14 years old) to support staff welfare and implement a new Outer boma for the release herd to ensure paddock rotation for increased welfare.



Expand and develop existing elephant behaviour research and data collection to support predictive modelling of anthropogenic threats to inform and support operational strategies for law enforcement and human-wildlife conflict.

COMMUNITY OUTREACH

Programme Director, Jeni Vanhoucke

This year, as we established our fifteenth Women's Group in Zambia, the emerging global spotlight on gender in the illegal wildlife trade highlighted our empowerment approach as progressive and meaningful. We are currently developing our data capture processes, to help us better understand the role of women as enablers in wildlife crime, and to measure our impact in improving livelihood security. We are also exploring how our Women's Groups can support and uplift conservation efforts in their own communities.

Human-Carnivore Conflict became an urgent and unexpected priority for the team in 2021, with a huge influx in cattle predation in the communities bordering Nkala GMA. In close collaboration with GRI's Resource Protection and Wildlife Rescue Programmes, we have designed and implemented a monitoring and mitigation strategy that supports livestock farmers with increased awareness, safe and affordable deterrents,



and effective fortification against carnivores. I look forward to consolidating our community outreach efforts in 2022 and of course, opening the doors to the eagerly anticipated Wildlife Discovery Centre - a long-term passion project - which will further increase conservation awareness, provide local employment opportunities, and enable greater collaboration between conservation partners in Zambia.

With thanks to our partners,



Community Outreach

CONSERVATION AWARENESS

Increasing access to conservation information in the communities contiguous to Zambia's Protected Areas

In 2021, GRI's Community Outreach Team,

Delivered weekly Conservation Education to **2,000** children

Facilitated **12** Educational Experiences at Lilayi Elephant Nursery

Installed **6** Information Boards on the harbour and islands of Itezhi-Tezhi

Reached **75,000** households through weekly community radio broadcasts

Trained **8** local teachers as Conservation Club Leaders

Provided teaching support to **1** community school

Facilitated discussions with **826** fishermen

IMPACT TO DATE



>500 teachers have been trained as Conservation Club Leaders



>40,000 books have been donated to Ranger Communities



126 orphaned and vulnerable children have been sponsored through school.



50 Nursery School Teachers have been trained in Early Childhood Development



>20,000 children have received conservation education



MILESTONE ACHIEVEMENTS



GRI-Community Outreach collected attitudinal data in Musungwa and Shezongo Chiefdoms guided by Van Hall Larenstein University student Anneke Holtman for her thesis, "The Perception of the Local Community on Wildlife and the Communication Tools that can Influence it"



Mickey Kanguya, a Zambian student from the African Leadership University, joined the Team for a 3-month internship, providing valuable support with conservation education content development and the establishment of four new women's groups



The Community Outreach Team hosted 3 football tournaments, reaching 30 men's teams, and established a U15 youth league. 7,000 individuals attended the matches and received targeted conservation messaging.

Community Outreach

LIVELIHOOD SECURITY

Empowering the communities contiguous to Zambia's Protected Areas with improved livelihood security.

In 2021, GRI's Community Outreach Team,

Equipped **3** Community Resources Boards with income generation projects

Empowered **50** primary schools with vegetable gardens

Established **5** new Women's Empowerment Groups

Built the capacity of **25** Village Action Groups

Supported **250** vulnerable women with alternative livelihoods

Empowered **16** Village Action Groups with cash for work fire management track clearing

IMPACT TO DATE



1 portable dental clinic donated to Itezhi-Tezhi Hospital



21 people trained as HIV testers and counsellors



35 households provided with access to clean water



2 community beehives installed



Over 1000 babies born complication-free at Basanga Maternal Health Centre



55 vulnerable households assisted with welfare support



MILESTONE ACHIEVEMENTS



Community Outreach Director Jeni Vanhoucke peer reviewed Joni Seager's WWF Report "Bringing a Gender Lens into the IWT space" and moderated the International Ranger Federations 2nd Ranger RoundTable Webinar "Towards Gender Equity in the Ranger Workforce"



FemInStyle Magazine highlighted the Community Outreach Team's work with vulnerable women in their November 2021 issue



The Community Outreach Team established four new Women's Groups in Lusaka with the goal of ultimately being able to source from them all our fresh produce for the Wildlife Discovery Centre.

Community Outreach

HUMAN WILDLIFE COEXISTENCE

Empowering local communities to coexist peacefully with wildlife.

In 2021, Game Rangers International

Installed boreholes in **4** communities suffering from water-based wildlife conflicts

Provided **3** Village Action Groups with communal predator proof kraals

Equipped **10** at-risk farmers with zero-visibility kraals

Empowered **10** subsistence farmers to grow sunflowers as an alternative cash crop

Trialled **1** new low-cost human-elephant conflict mitigation

Produced and distributed **2,000** human-conflict awareness stickers

Responded to **126** crop raiding incidents and **78** attacks on cattle

IMPACT TO DATE



12 radio shows dedicated to human-wildlife coexistence annually



1 Human Elephant Coexistence Ranger Unit trained and equipped



Polywire and flashing light fences trialled in the communities



Human Wildlife Coexistence awareness delivered via Conservation Clubs



Officers and farmers trained to safely utilize chili blocks



12 Elephant safe granary stores constructed



MILESTONE ACHIEVEMENTS

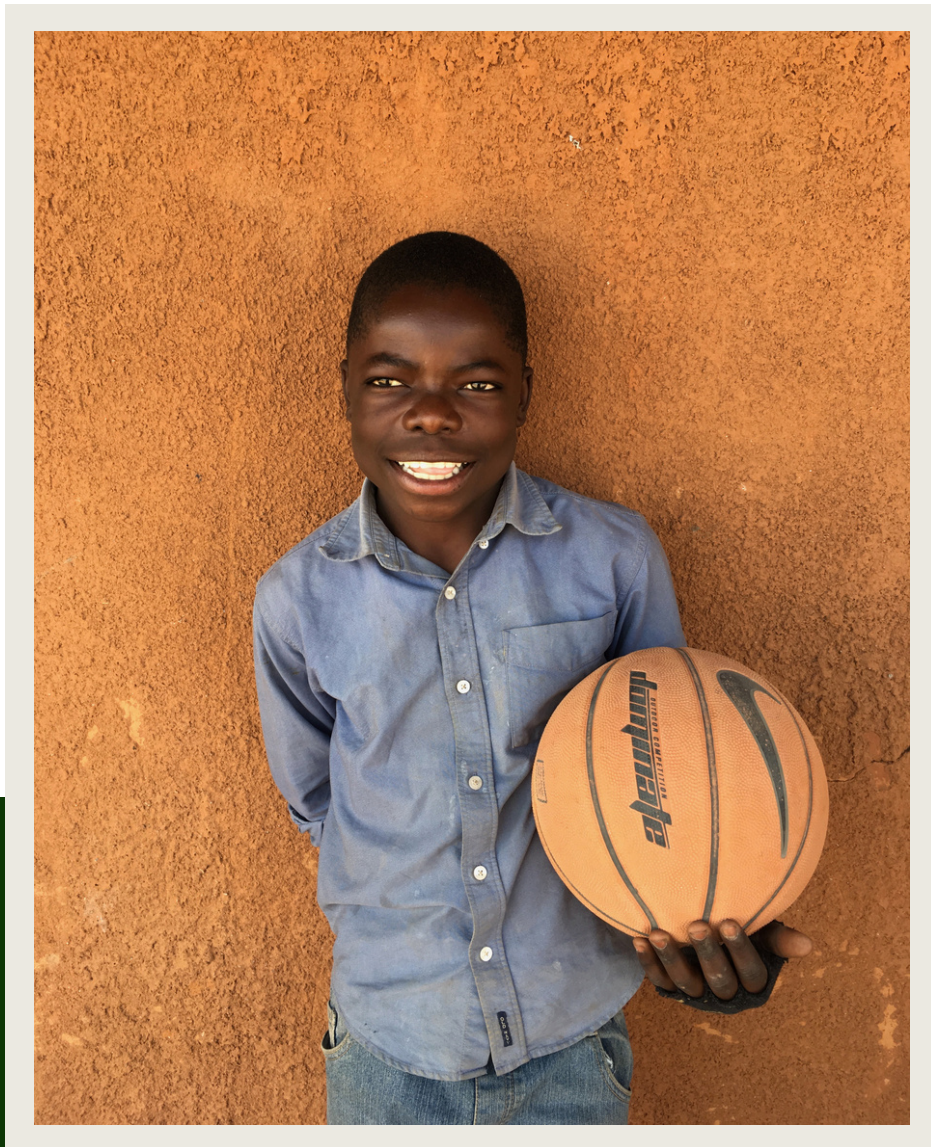


Billy Banda was recruited as GRI's first full-time Human-Wildlife Coexistence Ranger. Based at Musa, Billy is responsible for liaising with the community on all human-wildlife coexistence issues and supporting our sustainable livelihood initiatives.



In November, GRI facilitated our inaugural Human-Wildlife Coexistence Roundtable with local stakeholders to develop a systematic collaborative approach to Human-Carnivore Conflict in Nkala GMA

2022 OBJECTIVES



ENGAGE - EDUCATE - EMPOWER



Open the GRI-Wildlife Discovery Centre to the public and begin offering free, immersive educational experiences to local school groups



Continue to equip and empower the communities living contiguous to Nkala GMA with the means to coexist peacefully with wildlife



Galvanize public support for conservation, raise awareness and promote girls' empowerment in the communities contiguous to Nkala GMA through GRI's football league



Plan and design an academic study on Transactional Sex in the Illegal Wildlife Trade in Zambia

CONSERVATION TECHNOLOGY

With generous support from donors, in 2021, GRI expanded the use of innovative technologies to increase conservation outcomes. Real-time tracking of teams and assets, and increased digital surveillance, data capture and analysis increased situational awareness, and enabled more targeted responses to conservation threats.

In 2021, GRI Conservation Tech,

Empowered, with support and training, 5 female Rangers as Control Room Operators

Supported 3 Zambia conservation graduates dedicated to strengthening Conservation Tech

Captured over 900 Patrols in SMART

IMPACT TO DATE



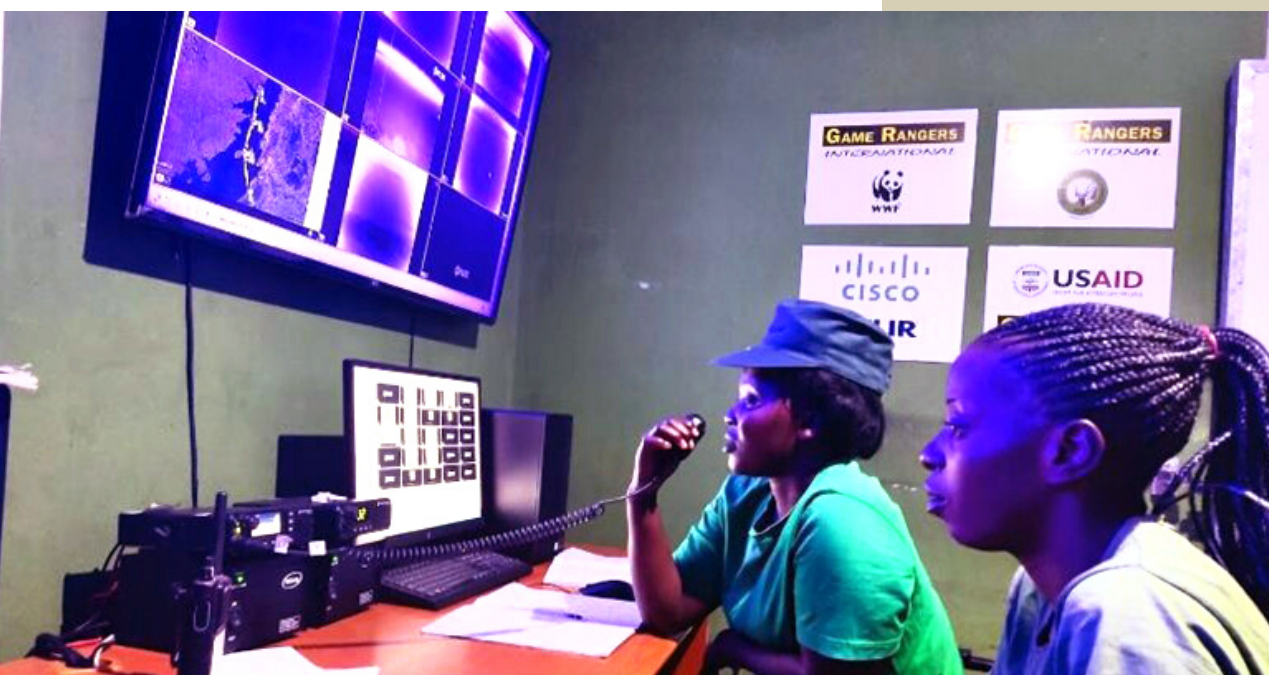
4,380 hours of night-time monitoring of a porous stretch of the KNP park boundary



50% increase in success versus illegal activity on Lake ITT (102 boats recovered in 2021 versus 68 in 2020)



1,200 Control Room Days supported



MILESTONE ACHIEVEMENTS



Partnered with Panthera and African Parks to implement EarthRanger across the whole Kafue landscape, with support from USAID VukaNow. EarthRanger will provide real time tracking and incident reporting for over 30 Ranger Teams and the programme will directly train over 100 Rangers and benefit a further 200.



Monitored 24/7 the porous 19km section of the KNP border that spans Lake ITT with the FLIR thermal imaging cameras of the Connected Conservation Project, and coordinated via DNPW Musa Control Room targeted responses to illegal activity.

WILDLIFE DISCOVERY CENTRE

Lusaka National Park



SET TO OPEN ITS DOORS IN 2022

In 2022, GRI will open a unique and immersive Wildlife Discovery Centre in Lusaka National Park. This centre will not only provide free conservation education to over 5,000 children every year but it will also be the new home of our renowned Elephant Nursery.

Fully accessible to all, the Wildlife Discovery Centre will welcome an estimated 40,000 local and international visitors each year to immerse themselves in interactive displays and exhibits that will highlight conservation issues and the efforts to resolve them. We aim to make a significant long-term contribution to the protection of wildlife and wild spaces by showcasing Zambia's natural wealth, increasing environmental awareness and inspiring greater conservation stewardship.

Construction began early 2021 with the ground-breaking of the Welcome Hub, Exploratorium and Conservation Huts, followed by a second ground-breaking of the elephant nursery.

The Wildlife Discovery Centre is being built with the support of,



PROGRESS SO FAR



The Exploratorium within landscaped gardens



The Conservation Huts



The steel structure of the elephant viewing hide



The beginning of the Wildlife Rescue offices

SUSTAINABLE DEVELOPMENT GOALS

17 Goals to transform our world

1 NO POVERTY

GRI supports sustainable livelihoods in 5 Chiefdoms contiguous to Kafue National Park.



2 ZERO HUNGER

GRI protects and empowers subsistence farmers living contiguous to Kafue National Park.



3 GOOD HEALTH AND WELLBEING

GRI has supported sexual, maternal and oral health programmes in Ranger communities.



4 QUALITY EDUCATION

GRI has supported over 1,543 training man days and delivered conservation education to over 15,000 children.



5 GENDER EQUALITY

Over 200 women have been empowered via GRI's Community Outreach Programme.



6 CLEAN WATER AND SANITATION

GRI has provided 34 households, 1 school and over 50 vulnerable individuals with access to clean water.



7 AFFORDABLE, CLEAN ENERGY

Over 60 households have benefited from solar power solutions through GRI's Community Outreach Programme.



8 DECENT WORK AND ECONOMIC GROWTH

GRI employs 77 full time staff and supports over 120 frontline Rangers.



9 INDUSTRY, INNOVATION AND INFRASTRUCTURE

GRI utilises thermal imaging technology to expand protections for people and wildlife in Zambia.



10 REDUCED INEQUALITIES

GRI has sourced full school sponsorship for 60 orphaned children and provided welfare support to 25 vulnerable families.



11 SUSTAINABLE CITIES AND COMMUNITIES

GRI is empowering communities with solar power, fuel efficient cookstoves and sustainable livelihoods.



12 RESPONSIBLE CONSUMPTION AND PRODUCTION

GRI grow vegetables at our bush camps to reduce or use of food to procure fuel



13 CLIMATE ACTION

GRI is 100% carbon neutral.



14 LIFE BELOW WATER

GRI supported rangers have apprehended 3,700kg of illegal fish meat since 2013.



15 LIFE ON LAND

GRI supported rangers have apprehended 1,274 poachers and traffickers and recovered 27 tonnes of bushmeat.



16 PEACE, JUSTICE AND STRONG INSTITUTIONS

GRI's Resource Protection Programme has recorded 600 successful convictions since 2013.



17 PARTNERSHIP FOR THE GOALS

GRI partners with Bio Carbon Paartners, EcoGas Zambia and the Department of National Parks and Wildlife



SUSTAINABLE DEVELOPMENT GOALS

17 GOALS TO TRANSFORM OUR WORLD

Fundraising, Marketing & Communications

FUNDRAISING

In 2021 the Fundraising, Marketing & Communications Department was fully realised with the appointment of a new manager. Now based in Peebles, Scotland, the department will be working to grow unrestricted funding for the organisation.

In 2021, the Fundraising department

Hosted a successful Elephant EPIC and raised over **\$30,000**


Supported conservation operations through the Volunteer Programme, operating at 70% capacity despite covid challenges


Uplifted the Adoption Program to an automated service with increased levels of sponsorship


Launched the GRI Online Shop




FUNDRAISING ACTIVITIES	REVENUE
Events	\$40,939
Merchandise Sales	\$8,965
Volunteer Program	\$61,972
Lilayi Nursery Entry Fees and Behind the Scenes	\$11,015
Adoptions & Sponsorship	\$4,387
Commercial Partnership	\$20,897
Donations	\$31,225
Campaigns	\$12,076
Media Fees	\$1,023
TOTALS	\$192,499

 **INSTAGRAM**
28,340 Followers

 **FACEBOOK**
23,464 Followers

 **TWITTER**
2,138 Followers

 **YOUTUBE**
145 Subscribers

 **LINKEDIN**
778 Followers

COMMUNICATIONS



COVERAGE FOR GAME RANGERS INTERNATIONAL IN 2021

"A Virtual Menagerie: How conservation and rescue efforts can connect us with wildlife around the world" The Washington Post	Jan-21
"A long, dark year" - 12 months into the Covid-19 crisis in Africa, The New Big 5	Feb-21
"Pass the Phone Challenge" IFAW TikTok video with Elvis Lisibi	Apr-21
Wildlife Artist of the Year Awards Ceremony – Elephant Nursery Keepers singing Amazing Grace alongside soprano Laura Wright	May-21
"Elephants' 500km-trek across China baffles scientists", BBC News, GRI Commentary by Lisa Olivier	Jun-21
"The Power of Democracy", Swedish Embassy in Zambia, Mary Muyoyeta interview	Jun-21
World Ranger Day Festival by Exploring by the Seat of your Pants – Interview with Sport Beattie	Jul-21
"Toyota 70 Years of Landcruiser", feature GRI video on Facebook featuring Rachael Murton	Sep-21
Conservation Careers Fair Zambia , Facebook Live Interview with Mary Muyoyeta	Oct-21
"Sisters in Safari", FemInStyle Africa, article , focusing on GRI's Women's Empowerment Project, featuring Jeni Vanhoucke	Nov-21
IEF Symposium, presentation and live Q&A by Rachael Murton and Mary Muyoyeta	Nov-21

FINANCIAL SUMMARY

Finance Director, Euphemia Zulu

The Finance Department is the hub of all financial data and covers all programmes across GRI. It is a team of three people comprising the Finance Director, Assistant Finance Manager, and Senior Finance Officer.

The role of finance is to support all GRI programs and ensure that activity plans are implemented within stipulated schedules through making timely disbursement of funds in an efficient, and cost-effective manner.

Finance also supports GRI donors by ensuring that disbursements, accounting of financial resources and reporting is conducted in a



transparent and consistent manner and that the processes align with GRI and donor policies and guidelines.

MILESTONE ACHIEVEMENTS



Successful trainings were conducted internally for all GRI employees. The trainings delivered information related to cash management, asset management, petty cash and cash advance management, and preparation of timesheets. The main purpose of the trainings was to highlight financial policies and procedures and improve cash management skills within the organization.



Successfully implemented the physical asset verification and asset marking exercise in three of GRI's sites. The aim was to have all assets identified and reconciled to financial records.



Successful finalization of the 2019 external audit, being the first ever statutory audit for GRI. The audit underlined positive developments in many aspects of GRI's performance since its inception in 2008. In the same vein, areas that required improvements were pointed out for which GRI was prepared to address.



Introduced the in-kind donations policy and related templates for purposes of recording all in-kind donations. This was to ensure that GRI's activities were adequately reflected and that all donors' contributions whether in cash or in-kind were equally recognised.

FINANCIAL SUMMARY



PROGRAMME	REVENUE	EXPENDITURE	SURPLUS/(DEFICIT)
Wildlife Rescue	\$840,478	-\$686,826	\$153,652
Community Outreach	\$259,505	-\$224,226	\$35,279
Resource Protection	\$1,391,996	-\$1,462,759	-\$70,763*
Admin/Fundraising/Marketing/Comms	\$462,000	-\$510,243	-\$48,243**
Total	\$2,953,980	-\$2,884,054	\$69,926

*Deficit due to delay in the start of a project. Start date moved to January 2022.

**Deficit due to capital expenses for the new volunteer programme.

2022 OBJECTIVES



Successful conclusions of external auditing activities for both 2020 and 2021.



Participate in risk management and ethics trainings



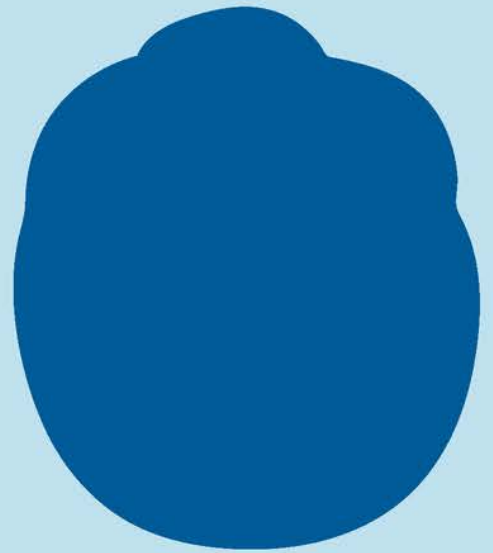
Increase corporate networking activities with the bank and some of GRI's donors



STRONG



CONNECTED



CARING



CREATIVE



EAGLE-EYED



FAST



FAR-REACHING



ADAPTIVE



DISTINCTIVE



COLLABORATIVE



LOYAL

At Nolands you'll find more than Audit, Tax, Accounting, Advisory and Training Services; you'll find a team that has **more in common with nature** than meets the eye. Give us a call and discover why we're not just growing in Zambia, we're truly making our mark.

www.nolands.global/zambia

Lusaka Office
+260 764 728 388

Kitwe Office
+260 954 833 300

Nolands
AUDIT • ADVISORY • TAX



#WEAREALLRANGERS



www.gamerangersinternational.org

